

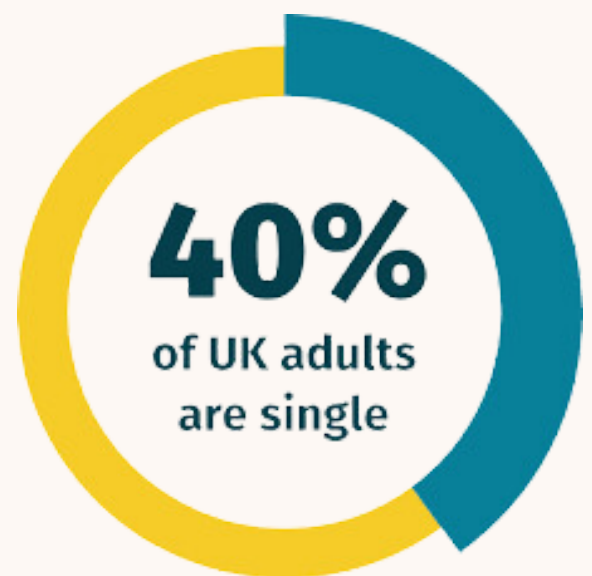


Budbrooke has been recognised as a single friendly church!

40% of the UK adult population are single and the number is increasing in every age group according to a YouGov survey. Single Friendly Church is a campaign, supported by Christian Connection, helping churches to include single adults.

The range of situations in which people find themselves single varies considerably, they may never have married, be a single parent, be separated or divorced, or widowed. Single Friendly Church also recognises that some people who are married attend church alone, and that these people encounter some of the same challenges in church as those who are single.

The Single Friendly Church group at Budbrooke completed the Single Friendly Church audit which identifies areas for churches to examine to see if some changes could be made that would make a difference to a single person's experience of church. We found that 40.7% of people that worship at Budbrooke are single and that our parish includes as many as 35% of people living alone.





We looked at the language used on our website and noticeboards, and in church to make sure that it is inclusive for single people, and we considered the welcome for single people, and their involvement in teaching and leadership.

Overall, the findings of the group were positive and found that the Budbrooke already has an approach that includes single people especially in the categories of teaching and leadership. To improve our 'single friendliness', some recommendations were made to the PCC including communicating the single friendly 'message' to the whole church, emphasising that it is everyone's responsibility to welcome, include and value single people.

Now that we have been recognised as a Single Friendly Church we have been added to a map of Single Friendly Churches so that single people looking to join a church know that we are Single Friendly. We'll also be able to use the Single Friendly Church logo on our website, notice boards and publicity material.

Further information on Single Friendly Church can be found on their website www.singlefriendlychurch.com. If you would like any other information about the audit and its findings, please contact Clare Watson, email dr_clare@hotmail.com.

